

KloudPortal is an easy-to-deploy, scalable Wi-Fi Captive Portal solution for enterprise and public networks that enhances the connectivity experience for users while unlocking valuable, actionable, data-driven insights for the business.

Kloudspot combines the best of network management, AI-based analytics, and monitoring on a single platform enabling businesses to deliver exceptional digital experiences with ease.



1

Centralized Network Management

- **Quick Deployment and Management**
Quickly design, provision, and apply policy to deliver better uptime and improved security.
- **Quality of Service (QoS)**
Manage data bandwidth and delay. Support for single session, multiple sessions time based quota
- **Centralized, multi-tenant, hierarchical dashboards**
Kloudspot provides complete multi-site, multi-tenant, configurable, informative dashboards to monitor and optimize network performance and guest experience.
- **Audit Logs**
Information about usage and changes to the system configuration.
- **Notifications**
Integration of notifications on Slack, Email and SMS. Log details on notifications sent by the system.
- **Reports**
On demand or scheduled reports.

2

Guest Portal

Support for complex, multi-steps splash pages with multiple guest sign-in and verification options including

- **Multiple login methods**
 - Web form-based login - Name, Phone, Email
 - Social Network Sign-on – Facebook, Google, Twitter
 - SMS Authentication / One-time password (OTP)
- **Rest API integrations**
 - Trial login for 5/10 minutes for email verification
 - Single use token – based authentication.
 - Name + room number authentication – for hotel guests.
 - Multi Device Token: Configurable token numbers to work with 'n' devices
 - Multi Devices User/Password: Single combination of username & password to authenticate 'n' devices.
- **Third Party Integrations** - Integrate login data from 3rd party systems such as CRM.

3

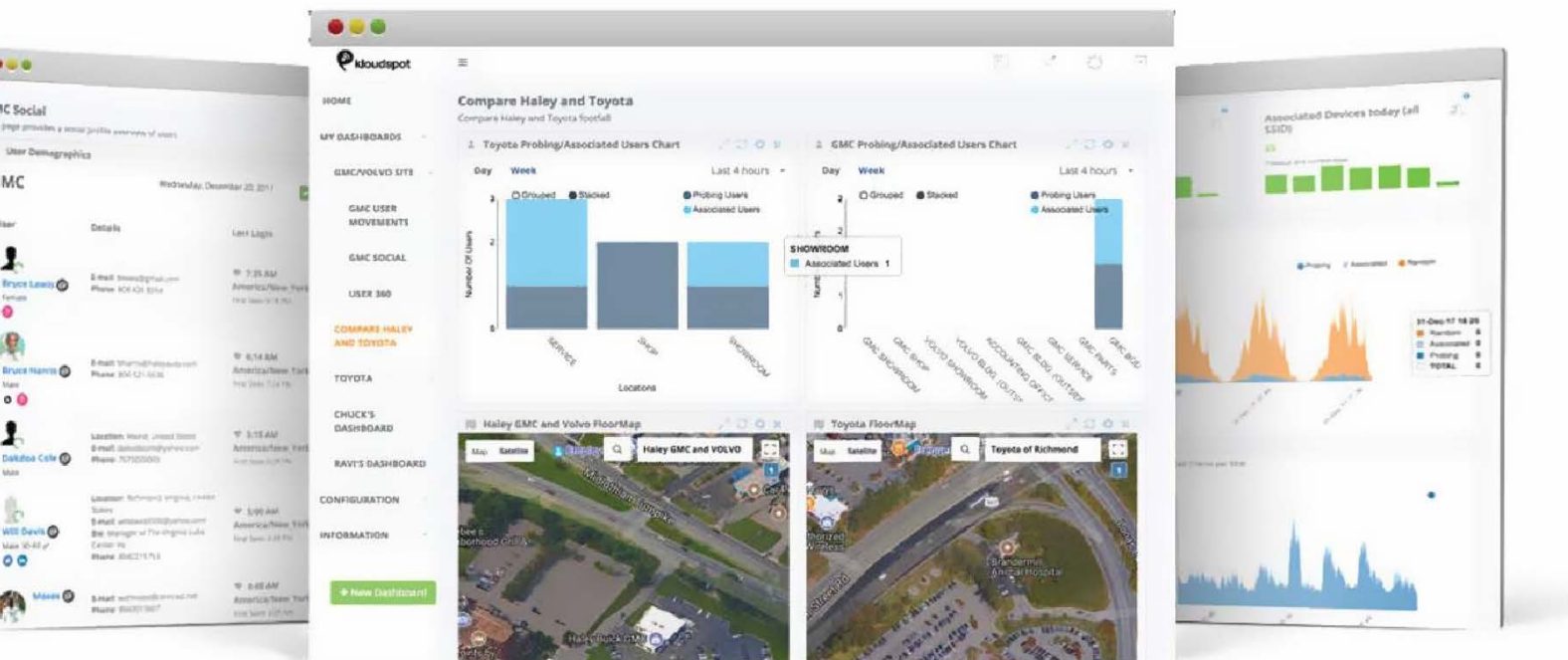
Campaigns and Surveys

- **Survey forms** - Use surveys to collect data as part of guest login
- **Advertisement** – Showcase your brand or monetize guest login pages with advertisements or brand promotions.

4

User Management

- **Client device identity and device information**
 - Customer Identity using MAC address and IP address
 - Device Information: such as OS, Vendor, browser used and device type
 - Time-stamp: Time stamp of user connected over the time.
 - Location: Keep track of user location where logged into the system.
- **User and device search** - Search for device and users based on any recorded user and device parameters
- **Bandwidth and time quota management**
 - View bandwidth usage – upload and download at device and network levels
 - Block device for set period if it breaches bandwidth or time-based quota.



5

NAT Logs

Kloudspot has enhanced its offering with NAT logging capabilities, providing network administrators with detailed tracking of address translation events for improved security and network oversight. This enables

- Recording of session details, with IP mappings and connection data
- Streamlining troubleshooting and compliance.
- Heightened control and monitoring to network traffic management
- Strengthening of network operations

6

Customizable Reports and Data Export

Various reports are available out of the box or customized as needed

- **Overview Report (PDF)** - Connected, probing guest clients and devices details
- **Client Details Report (CSV)** -Client details including mac address, device details
- **Used Token Details Report (CSV)** - Used token details including token, device, venue, time etc.

7

Data Storage and Retrieval

Kloudspot store all data in the local storage and can be exported as CSV files. It also supports to periodically send data using the webhook. A webhook (also called a web callback or HTTP/HTTPS push API) is a way for an app to provide other applications with real-time/batch information. Unlike typical APIs where you would need to poll for data, webhook pushes the data to other application. This makes webhooks much more efficient for both provider and consumer.

8

Third Party Integrations

- **Using Rest based API** for third party apps.
- **With External SMS gateways** to send notification and OTPs.
- **For Social networks based authentication** for Guest Wi-Fi
- **With External Email SMTP server**

Designed for performance and scalability

The Kloudspot Captive Portal is ideal for malls, hotels, airports, enterprises, co-working spaces, hostels, events, cafes, stadiums, theme-parks and other public places. The Kloudspot Captive Portal can be deployed on-cloud as a software or on-premise (Kloudspot Access-in-a-box) model.

About Kloudspot

Kloudspot is the leader in enabling digital transformation for business by creating intelligence and engagement systems over cloud managed wireless and sensor networks. By enhancing customer identification, understanding and analysis, Kloudspot customers achieve better customer engagement. Kloudspot's Situational Awareness platform provides business value through analytics that convert physical actions of people and devices, IoT, transforming them into real-time digital insights that can be harnessed to deliver better customer experiences and create revenue generating opportunities both online and offline.

Visit us at [Kloudspot.com](https://kloudspot.com)

Kloudspot Inc.
1285 Oakmead Parkway Sunnyvale, CA 94085 USA
E: contact@kloudspot.com

